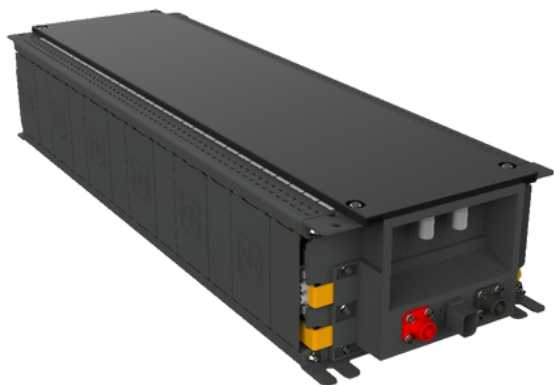




durapower

DP FLEX

LIGHTWEIGHT BATTERY MODULE



Energy

10.66 kWh

Nominal Capacity

96 Ah

Nominal Voltage

111 V

Energy Density

~ 169Wh/Kg

Weight

~ 63 Kg

Dimensions

850 x 276 x 152 mm

Max. Charging Rate Continuous

1 C

Max. Discharging Rate Continuous

1.5 C

ENABLING TECHNOLOGIES

- It uses electric vehicle chassis as the battery pack enclosure resulting in significant energy density benefits from the overall lighter weight.
- It can be installed into cabinets or containers for stationary energy storage system (ESS) applications.
- Applicable in all-weather conditions and seasons.
- Suitable for heavy-duty load cycles.
- Designed for fast pantographic charging allowing vehicles to travel longer ranges with minimum battery load.

WHY DP FLEX?

- Lightweight design with no compromise on structural integrity.
- Flexible system design to meet various heavy-duty application needs.
- Ready for second-life deployment.
- Certified Module:
 - UN ECE R100 (United Nations Economic Commission for Europe Regulation No.100)
 - UN38.3 (United Nations 38.3)
 - IEC 62660-2*
 - IEC 62619*

** International Electrotechnical Commission*